



## BRANDO Design CRS Barzaghi Salotti

**STRUTTURA.** In legno massello rivestito con poliuretano espanso a quote differenziate ad alta resilienza e ricoperto da fibra termolegata e traspirante accoppiata con tela di cotone bianca. Molleggio garantito da cinghie elastiche ad alto componente di caucciù.

**RIVESTIMENTO FINALE.** Tessuto, completamente sfoderabile. Pelle, cuscini seduta e schienale sfoderabili.

**CUSCINI SCHIENALE.** In piuma d'oca vergine canalizzata (certificata Assopiuma, Etichetta Oro) con inserto in poliuretano espanso ad alta resilienza.

**CUSCINI SEDUTA.** In piuma d'oca canalizzata (Certificata Assopiuma, Etichetta Oro) con inserto in poliuretano espanso ad alta resilienza.

**PIEDI.** Alluminio H. mm 160 - finiture disponibili: cromato - brunito opaco - satinato.

**STRUCTURE.** In solid wood covered with high resilience, variable-density polyurethane foam and a breathable heat-bonded quilted fiber casing laminated to a white cotton fabric. Suspension provided by high-rubber-content elastic webbing.

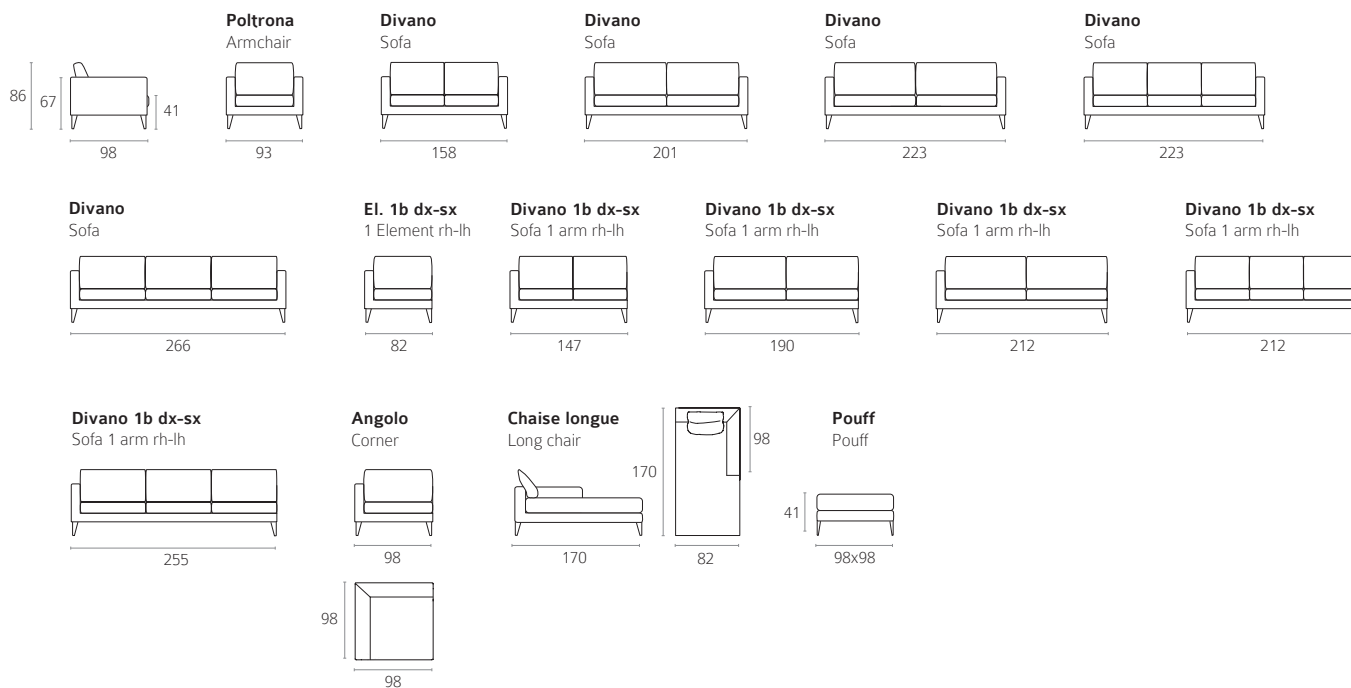
**COVER.** Removable fabric. Leather, only cushions removable.

**BACKREST CUSHIONS.** Are made with channeled goose down (Certified Assopiuma, Gold Label) with structural support insert in polyurethane foam.

**SEAT CUSHION.** Are made with channeled goose down padding (Certified Assopiuma, Gold Label) with a structural support insert in polyurethane foam

**FEET.** Alluminium H. mm 160 - Finishes: chromed - matt burnished - satine.

## ELEMENTI SINGOLI / ELEMENTS



## FINITURE PIEDE / FEET FINISHES

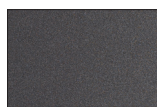
### METALLO / METAL



**Cromato**  
Chromed



**Satinato**  
Satined



**Brunito opaco**  
Matt burnished