



## BRANDO LARGE Design CRS Barzaghi Salotti

**STRUTTURA.** In legno massello rivestito con poliuretano espanso a quote differenziate ad alta resistenza e ricoperto da fibra termolegata e traspirante accoppiata con tela di cotone bianca. Molleggio garantito da cinghie elastiche ad alto componente di caucciù.

**RIVESTIMENTO FINALE.** Tessuto, completamente sfoderabile. Pelle, cuscini seduta e schienale sfoderabili.

**CUSCINI SCHIENALE.** In piuma d'oca vergine canalizzata - Cuscino schienale supplementare in piuma d'oca vergine canalizzata.

**CUSCINI SEDUTA.** In poliuretano espanso ad altissima resilienza a quote differenziate con PF 40/M e OLMOSOFF 35, rivestito con ovatta gr. 200 accoppiata a vellutino. Rivestimento in cotone 100% sfoderabile.

**PIEDI.** In pvc nero antiscivolo, H. mm 20.

**STRUCTURE.** In solid wood covered with high resilience, variable-density polyurethane foam and a breathable heat-bonded quilted fiber casing laminated to a white cotton fabric. Suspension provided by high-rubber-content elastic webbing.

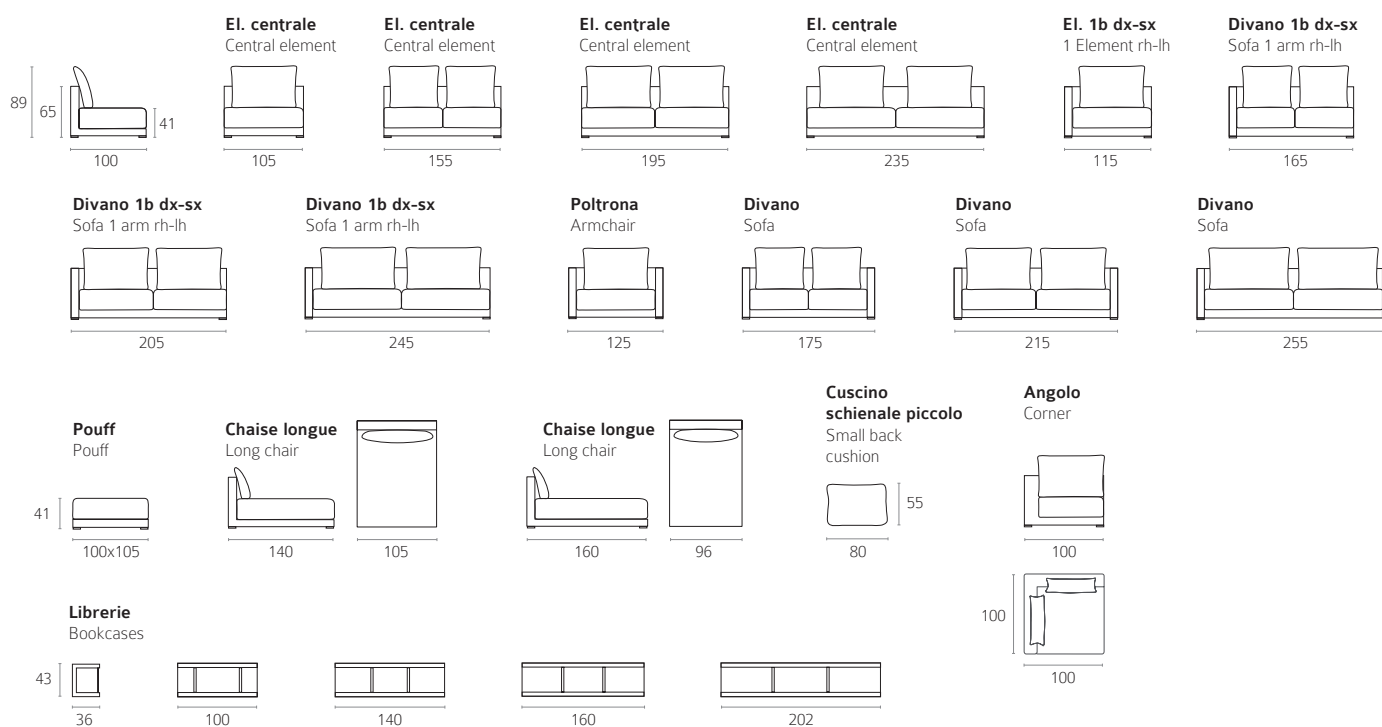
**COVER.** Completely removable fabric. Leather, only cushions removable.

**BACKREST CUSHIONS.** Made with channeled goose down padding - extra backrest cushions with channeled goose down padding.

**SEAT CUSHION.** In polyurethane foam with high resilience PF 40/M e OLMOSOFF 35, upholstered with fiber gr. 200 coupled with velvet and covered with cotton 100%.

**FEET.** In black pvc, mm. 20 high.

### ELEMENTI SINGOLI / ELEMENTS



### FINITURE LIBRERIA / BOOKCASES FINISHES

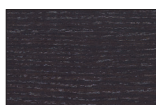
#### LEGNO / WOOD



**Rovere chiaro**  
Natural oak



**Rovere grigio**  
Grey oak

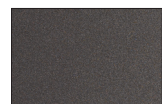


**Rovere moro**  
Dark oak



**Laccato bianco opaco**  
Mat white lacquered

#### METALLO / METAL



**Bronzo**  
Bronze