



IN&OUT Design Cesare Ballabio

STRUTTURA. In legno massello rivestito con poliuretano espanso a quote differenziate ad alta resistenza e ricoperto da fibra termolegata e traspirante accoppiata con tela di cotone bianca. Molleggio garantito da cinghie elastiche ad alto componente di caucciù.

RIVESTIMENTO FINALE. Tessuto, completamente sfoderabile. Pelle, cuscini seduta e schienale sfoderabili.

CUSCINI SCHIENALE. In piuma d'oca vergine canalizzata. Rivestimento in 100% cotone bianco.

CUSCINI SEDUTA. In poliuretano espanso ad alta resilienza rivestito in fibra e resinati.

MECCANISMO. Sistema di estrazione sedute mediante scorrimento su telaio in ferro.

Disponibile anche fisso.

BASAMENTO. Laterale - tubolari metallo - h. mm 25 - finiture disponibili: cromato - brunito opaco - satinato.

STRUCTURE. In solid wood covered with high resilience, variable-density polyurethane foam and a breathable heat-bonded quilted fiber casing laminated to a white cotton fabric. Suspension provided by high-rubber-content elastic webbing.

COVER. Removable fabric. Leather, only cushions removable.

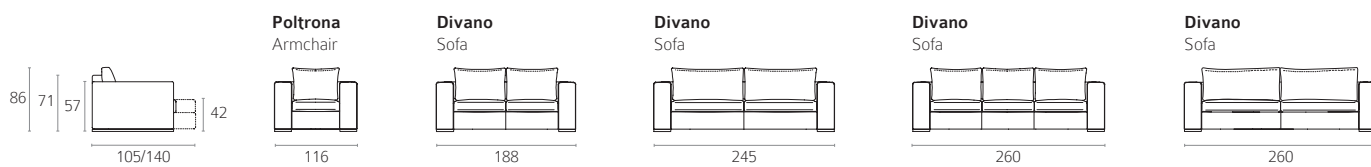
BACKREST CUSHIONS. Are made with channeled goose down covered with 100% of white cotton.

SEAT CUSHION. In polyurethane foam with high resilience covered with dacron.

MECHANISM. Exit seating system by sliding on an iron frame. Also available without system.

BASEMENT. Lateral - tubular metal - h. mm 25 - finishes: chromed - matt burnished - satined.

ELEMENTI SINGOLI / ELEMENTS



FINITURE PIEDE / FEET FINISHES

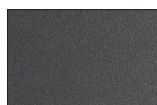
METALLO / METAL



Cromato
Chromed



Satinato
Satined



Brunito opaco
Matt burnished