



## MUST OVER Design CRS Barzaghi Salotti

**STRUTTURA.** In legno massello rivestito con poliuretano espanso a quote differenziate ad alta resistenza. Molleggio garantito da cinghie elastiche ad alto componente di caucciù.

**RIVESTIMENTO FINALE.** Tessuti e pellami in molteplici tipologie. Completamente sfoderabile nella versione in tessuto. Cuscinate sfoderabili nella versione in pelle.

**CUSCINI SCHIENALE.** In piuma d'oca vergine canalizzata (certificata Assopiuma, Etichetta Oro) con supporto in poliuretano espanso e dacron.

**CUSCINI SEDUTA.** In poliuretano espanso ad alta resilienza e fibra termolegata e traspirante accoppiata con tela di cotone bianca.

**BASAMENTO.** H. mm 95 - finiture: cromo - brunito opaco.

**STRUCTURE.** In solid wood covered with high resilience, variable-density polyurethane foam and a breathable heat-bonded quilted fiber casing laminated to a white cotton fabric. Suspension provided by high-rubber-content elastic webbing.

**COVER.** Removable fabric in different types. Leather (only cushions removable) in different types.

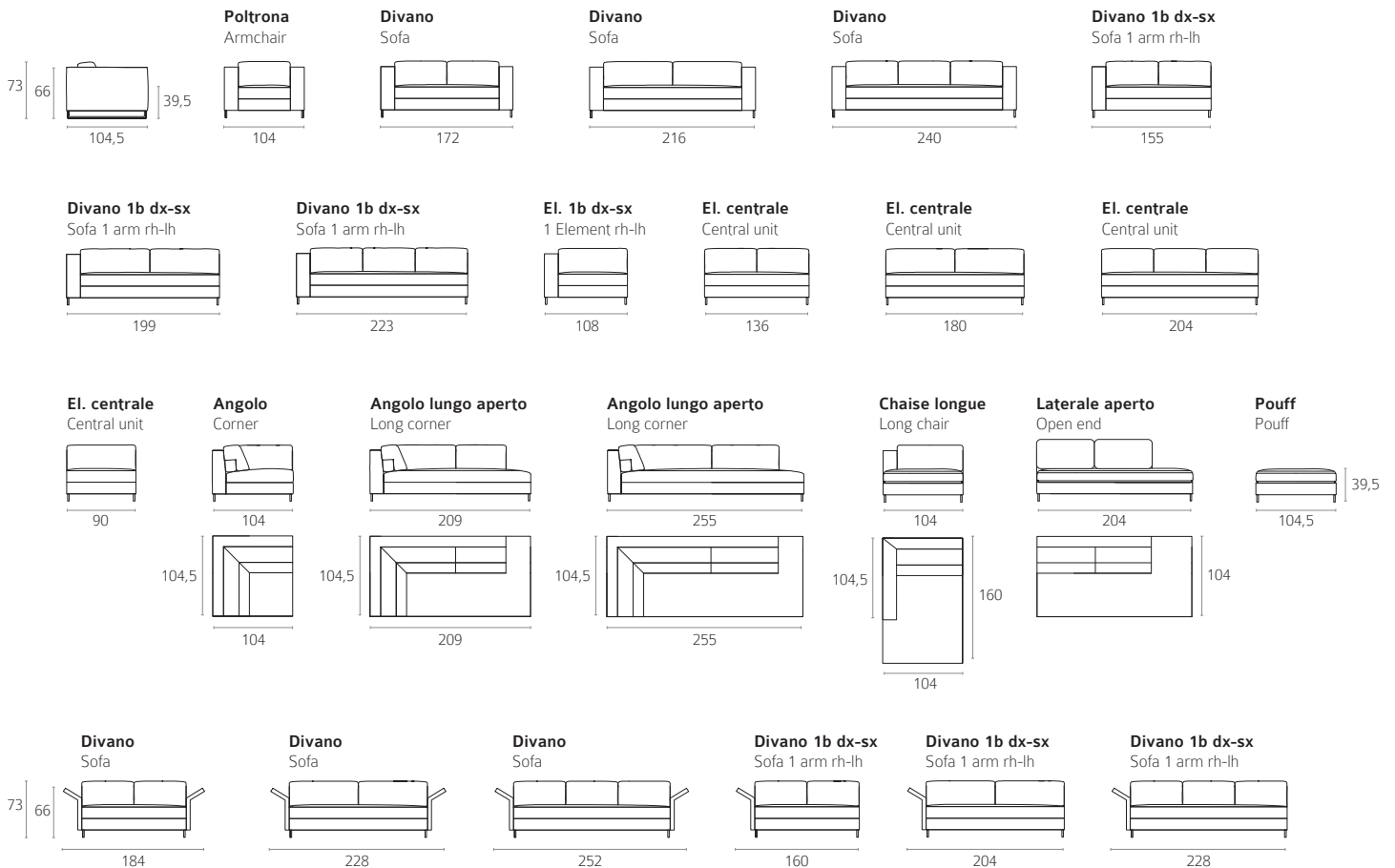
**BACKREST CUSHIONS.** Are made with channeled goose down padding (certified Assopiuma, Gold Label) with structural support insert in polyurethane foam.

Shaped to put the cushion in two positions is correlated with a lumbar support in goose down padding (certified Assopiuma, Gold Label) and an insert in polyurethane foam.

**SEAT CUSHION.** In high resilience polyurethane foam and a breathable heat-bonded quilted fiber casing laminated to a white cotton fabric.

**BASEMENT.** H. mm 95 - finishes: chromo - matt burnished.

## ELEMENTI SINGOLI / ELEMENTS

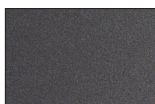


## FINITURE PIEDE / FEET FINISHES

### METALLO / METAL



**Cromato**  
Chromed



**Brunito opaco**  
Matt burnished

## MOVIMENTO / MOVEMENT

