



## ROGER Design CRS Barzaghi Salotti

**STRUTTURA.** In legno massello rivestito con poliuretano espanso a quote differenziate ad alta resistenza e ricoperto da fibra termolegata e traspirante accoppiata con tela di cotone bianca. Molleggio garantito da cinghie elastiche ad alto componente di caucciù.

**RIVESTIMENTO FINALE.** Tessuto, completamente sfoderabile. Pelle, cuscini seduta e schienale sfoderabili.

**CUSCINI SCHIENALE.** In piuma d'oca vergine canalizzata con supporto centrale in poliuretano espanso.

**CUSCINI SEDUTA.** In poliuretano espanso ad alta resilienza rivestito in fibra.

**PIEDI.** Metallo - H. mm 40 - finiture disponibili: cromato - brunito opaco. Legno - H. mm 40 - finiture disponibili: wengè - noce.

**STRUCTURE.** In solid wood covered with high resilience, variable-density polyurethane foam and a breathable heat-bonded quilted fiber casing laminated to a white cotton fabric. Suspension provided by high-rubber-content elastic webbing.

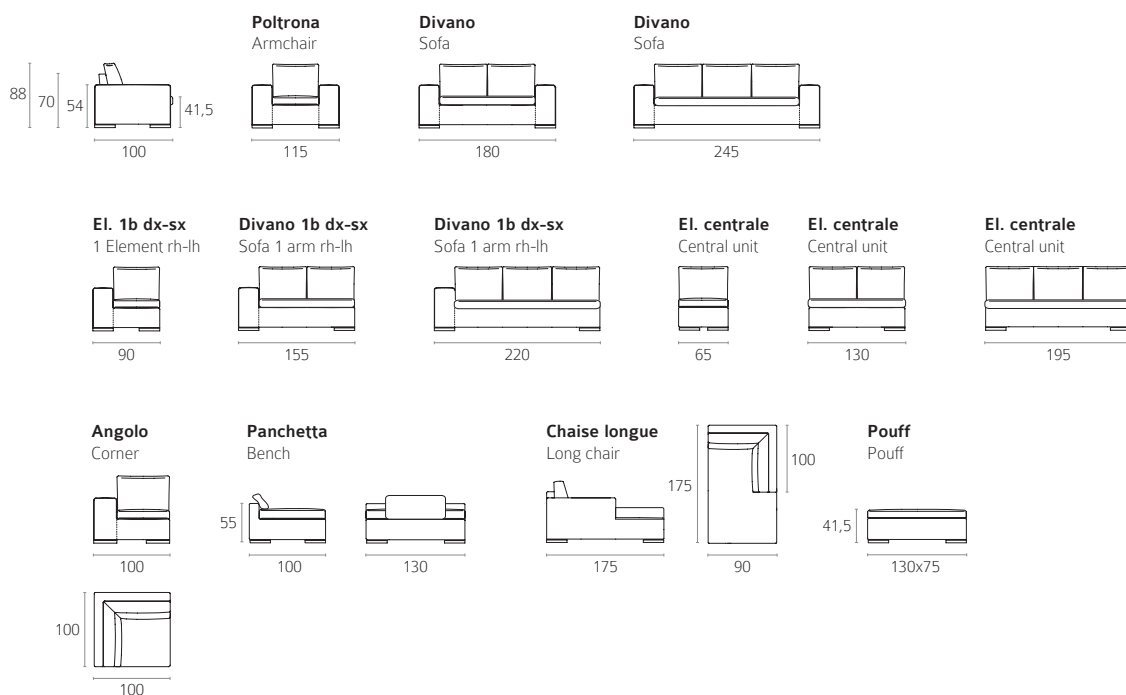
**COVER.** Removable fabric. Leather, only cushions removable.

**BACKREST CUSHIONS.** Are made with channeled goose down.

**SEAT CUSHION.** In polyurethane foam with high resilience covered with dacron.

**FEET.** Metal - H. mm 40 - finishes: chromed - matt burnished. Wood - H. mm 40 - finishes: wengè - walnut.

## ELEMENTI SINGOLI / ELEMENTS



## FINITURE PIEDE / FEET FINISHES

### LEGNO / WOOD



**Noce**  
Walnut

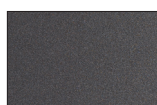


**Wengè**  
Wengè

### METALLO / METAL



**Cromato**  
Chromed



**Brunito opaco**  
Matt burnished