



SKIP Design Cesare Ballabio

STRUTTURA. In ferro rivestito da fibra termolegata accoppiata con tela di cotone bianca.

RIVESTIMENTO FINALE. Tessuti e pellami in molteplici tipologie. Completamente sfoderabile nella versione in tessuto. Cuscinate sfoderabili nella versione in pelle.

CUSCINI SCHIENALE. In piuma d'oca vergine canalizzata (certificata Assopiuma, Etichetta Oro).

CUSCINI SEDUTA. In piuma d'oca canalizzata (certificata Assopiuma, Etichetta Oro) con inserto portante in poliuretano espanso ad alta resilienza.

PIEDI. Metallo h. mm 195. Disponibile nelle seguenti finiture: cromato - brunito opaco.

BASAMENTO. Slitte metallo h. mm 195. Disponibile nelle seguenti finiture: MA02 brown - MA05 smoke.

STRUCTURE. In iron covered by fiber casing laminated to a white cotton fabric.

COVER. Removable fabric in different types. Leather (only cushions removable) in different types.

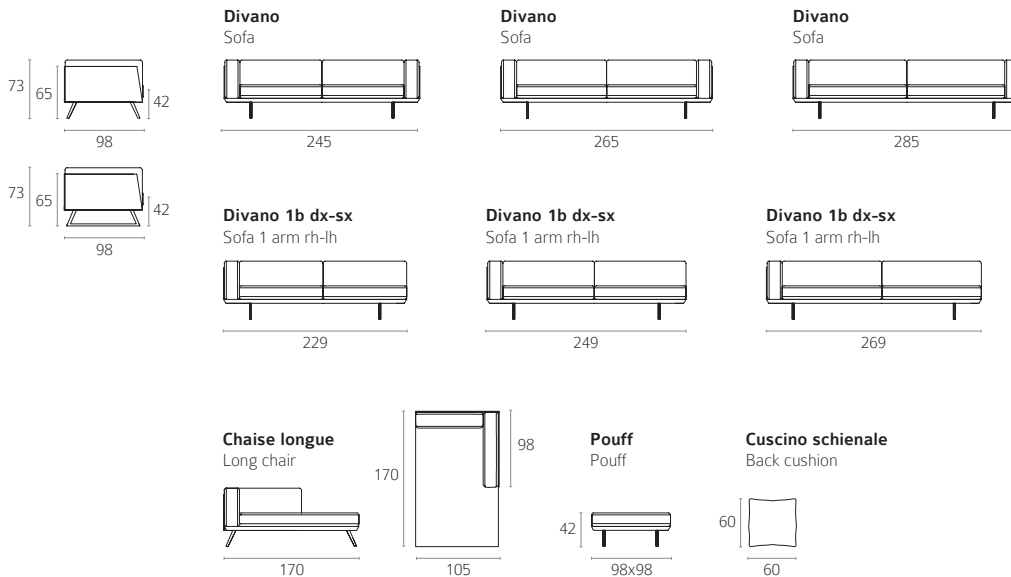
BACKREST CUSHIONS. Are made with channeled goose down padding (certified Assopiuma, Gold Label).

SEAT CUSHION. Are made with channeled goose down padding (certified Assopiuma, Gold Label) with structural support insert in polyurethane foam.

FEET. Metal h. mm 195. Available with following finishes: chromed - matt burnished.

BASEMENT. Sledges metal h. mm 195. Available with following finishes: MA02 brown - MA05 smoke.

ELEMENTI SINGOLI / ELEMENTS



FINITURE PIEDE / FEET FINISHES

METALLO / METAL



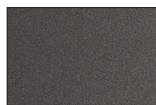
Cromato
Chromed



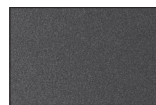
Brunito opaco
Matt burnished

FINITURE BASAMENTO / BASEMENT FINISHES

METALLO / METAL



MA02 Brown



MA05 Smoke