



SKIP BED Design Cesare Ballabio

STRUTTURA. In ferro rivestito da fibra termolegata e traspirante accoppiata con tela di cotone bianca.

CUSCINI DI TESTATA. In poliuretano ad alta resilienza e fibra termolegata rivestito con trapuntino in piuma d'oca vergine canalizzata e tessuto 100% cotone.

RETE. Pianale in multistrato pantografato per permettere l'aerazione.

RIVESTIMENTO FINALE. Tessuto, completamente sfoderabile. Pelle, giroletto e cuscini testata sfoderabili.

PIEDI. Metallo h. mm 220, finiture: MA05 - MA02 - Bronze - Dark grey.

STRUCTURE. In metal covered with a breathable heat-bonded quilted fiber casing laminated to a white cotton fabric.

HEADREST CUSHIONS. In high resilience polyurethane foam covered with feather quilt and white cotton 100%.

BEDSTEAD TYPE. Pantographed plywood platform to allow ventilation.

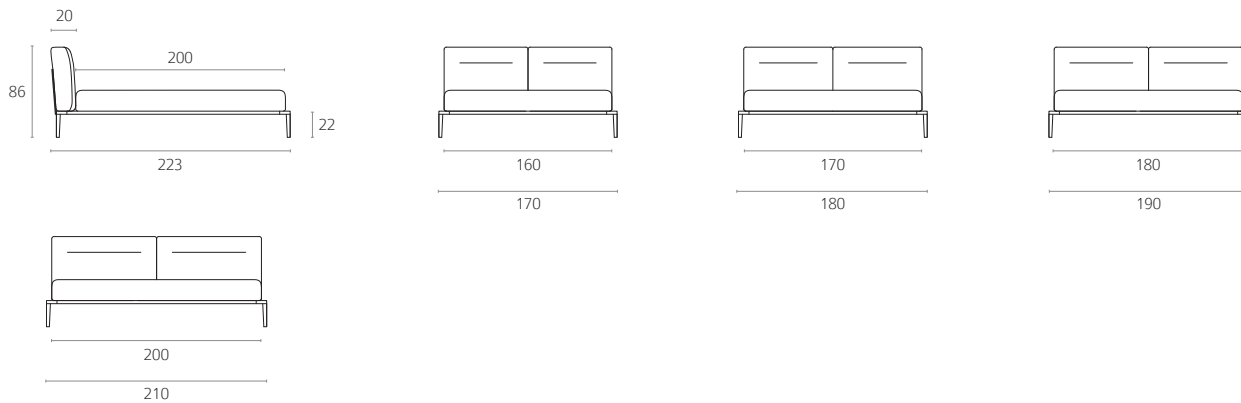
COVER. Fabric, Completely removable. Leather, removable base frame and headrest cushions.

FEET. Metal h. mm 220, finishes: MA05 - MA02 - Bronze - Dark grey.

DIMENSIONI / SIZES

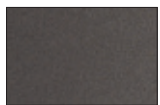
Base con rete fissa.

Fixed base.



FINITURE PIEDE / FEET FINISHES

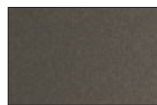
METALLO / METAL



MA02 Brown



MA05 Smoke



Bronze



Dark grey